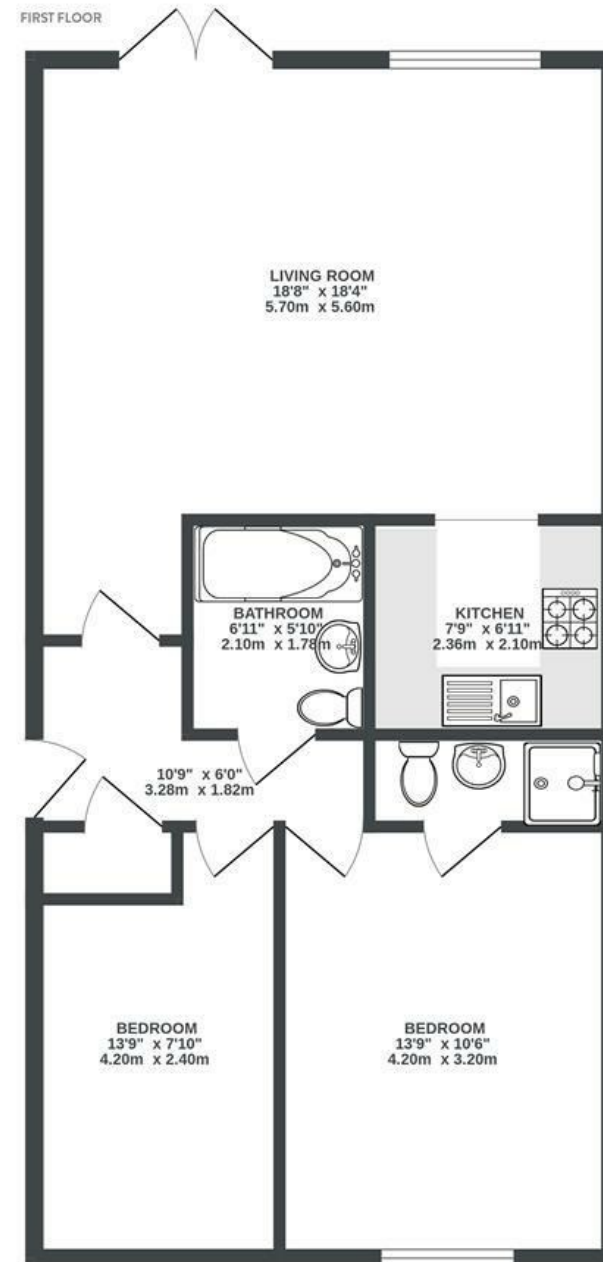


Ashley Heights

ASHLEY DOWN

APPROXIMATE FLOOR AREA
66.1 SQM / 712 SQFT



Boardwalk

Ashley Down

, BRISTOL



£290,000



2 Bedrooms



BS7 9DD



2 Bathrooms

"It has been a brilliant place to live as two young professionals for the last five years. We've really enjoyed being so close to Gloucester Road with so many lovely coffee shops, great restaurants (Jean's Thai and Lona's!), pubs and to chill in the beautiful St Andrew's park. We also loved walking to St. Werburgh's where we enjoyed grabbing a pint or a Sunday roast at The Farm. We really valued being part of a warm and welcoming community in Ashley Heights."

